

National Extension Climate Initiative

Paul Lachapelle, Montana State University

Myra Moss, Ohio State University

Lisa Wise & Charlie French, University of New Hampshire

Dan Kahl, University of Kentucky

Peter Barcinas, University of Guam

National Extension Climate Initiative Website

National Extension Climate Initiative

This initiative serves to link climate change-related education and research across Extension program areas and Associations. This effort is open to all extension professionals with the following objectives:

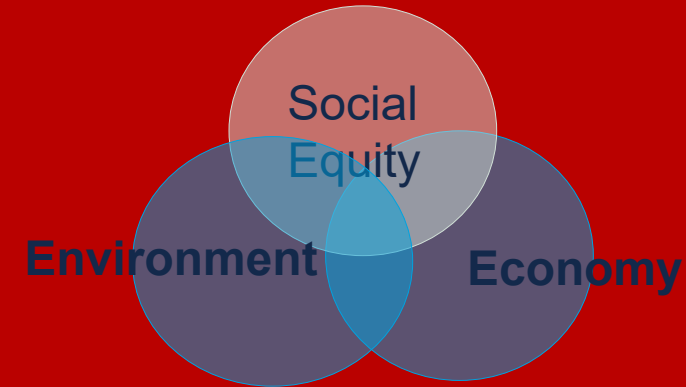
1. Communicate and share current and future work with a core group of self-selected faculty and staff representing all program areas of Extension who meet regularly via list serve, social media and video conference.
2. Represent participating Land Grant Universities, Associations, and related committees and organizations.
3. Meet annually via each Association conferences and affirm progress.
4. Pursue grant funding collaboratively.

National Extension Climate Initiative Map



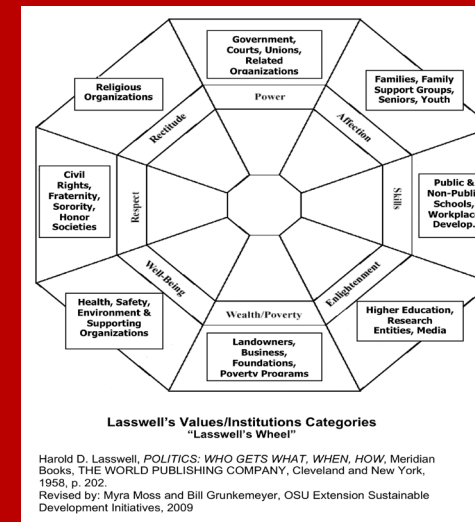
Ohio State University Extension: Building Sustainable Communities

Inclusion
Long Term
Interconnected &
balanced
Multidimensional



Contact: Myra Moss, Professor/Educator
moss.63@osu.edu

[https://comdev.osu.edu/programs/
community-planning/sustainable-development](https://comdev.osu.edu/programs/community-planning/sustainable-development)



Ohio State University Extension: Climate Change Education

Global Climate Change: Update 2020

<https://ohioline.osu.edu/factsheet/cdfs-203>

4H Project Idea Starter

Presentations: 17 counties in Ohio

Contact: Thomas Blaine, PhD, Associate Professor

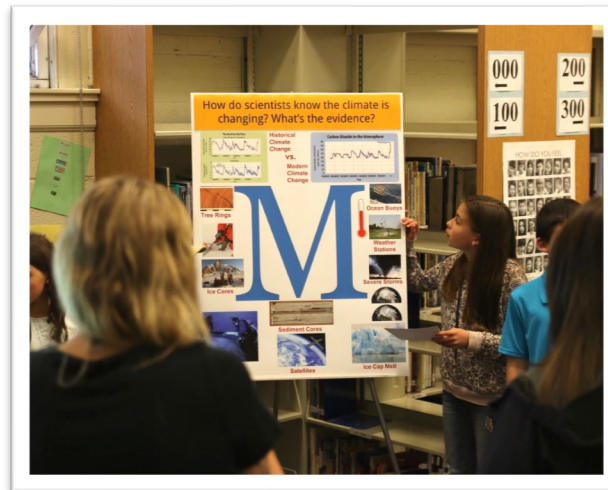
<https://comdev.osu.edu/people/thomas-blaine-phd>

Climate Adaptation Programming in NH

Workshops, technical assistance, public input opportunities



Climate in the Classroom



Regional collaborative groups



Upper Valley Adaptation Workgroup



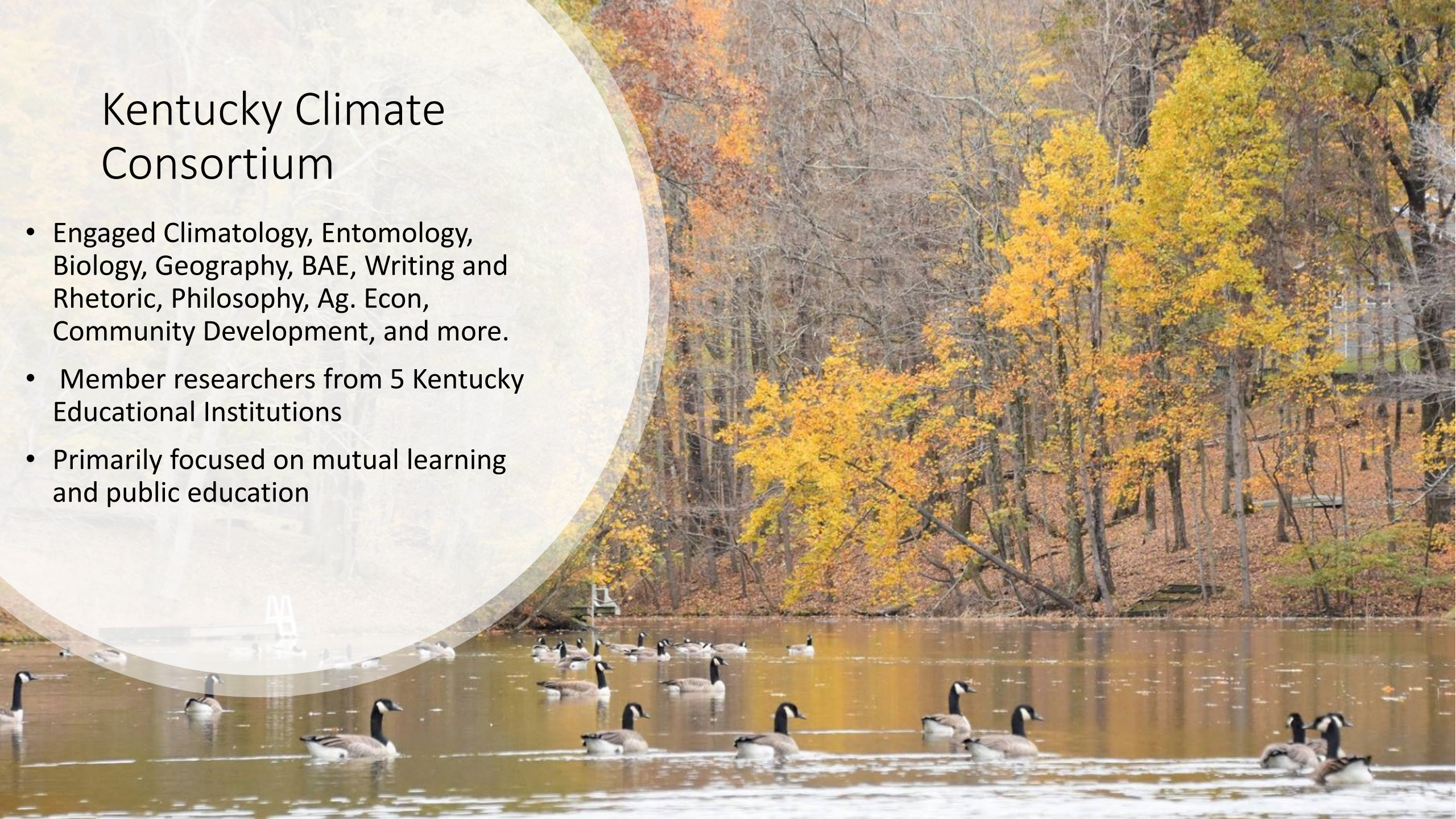


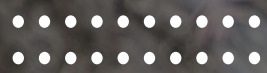
Kentucky Climate Consortium

<https://www.research.uky.edu/climate-consortium>

Kentucky Climate Consortium

- Engaged Climatology, Entomology, Biology, Geography, BAE, Writing and Rhetoric, Philosophy, Ag. Econ, Community Development, and more.
- Member researchers from 5 Kentucky Educational Institutions
- Primarily focused on mutual learning and public education





What is Climate Change, and what does it mean for Kentucky?

Provide research information to organizations, institutions and communities.

Currently focusing on the breadth of change impacts to Kentucky and ideas for responding to them.



Extension Community Development and a Changing World

Resilience is the ability to respond to and thrive in spite of disruptions. Community resilience is improved when communities can plan and prepare to minimize disruptions.

Resources available to Communities through CEDIK:

<https://cedik.ca.uky.edu/cld-resources>

IMAGINE THE IMPLICATIONS!

Facilitating Mind Mapping to Identify Community Repercussions from a Disruption

BY DANIEL KAHL, PH.D.

Community disruptions are changes in the world that cause us to rethink our community systems and processes. During the 2020 pandemic for example, it became clear that the systems and behaviors that worked before would need to be reconsidered. Because of the complexity of interactions within a community, it is often difficult to anticipate the many ways a disruption may impact community members or the ways we live our lives.

The process called *Imagine the Implications!* is a method of brainstorming that allows a group to map out the repercussions of an event or situation. Based on the assumption that a community disruption serves as a stimulus for creating a meaningful response, the process outlined in this document seeks to identify the far-reaching implications of a disruption in the community. Involving community members in this exercise will help them to anticipate and respond to needed change. This publication provides step-by-step guidance to Extension Agents or community leaders on how to facilitate a group mapping exercise to identify implications of a community disruption and consider actions for responding to those disruptions.

MAPPING COMMUNITY IMPLICATIONS

Conceptual Background

Many corporations, organizations and communities use tools such as strategic scenario mapping, future mapping, futures wheel, or simulation gaming to identify and plan for future scenarios. *Imagine the Implications!* is a simplified adaptation of mind mapping and ripple effect mapping processes specifically intended to identify potential areas impacted by a community disruption. It is not intended to be a comprehensive tool for community planning but may point to the importance of doing a more comprehensive planning process. Additional resources for strategic planning are listed at the end of this document.

For this exercise, consider using the Community Capitals Framework as a way of detailing community structure. The Community Capitals Framework considers the following arenas important to community sustainability:

- Financial
- Natural
- Built
- Cultural
- Social
- Political
- Human

Another strategy is to frame the conversation around how the disruption will impact existing community systems. These might include:

- Healthcare
- Economy/business
- Manufacturing
- Employment
- Education
- Transportation
- Governance
- Safety
- Other



Figure 1. Example of completed effects map. Source: University of Washington, <https://ppe.cw.uw.edu/ripple-effects-mapping>

Intended Outcomes

Hosting a mapping session in accordance with this facilitation guide can be beneficial to participants and the community more broadly. Immediate outcomes include:

Collaboration with local GovGuam and Federal Agencies

Adaptation and Resiliency Planning and Needs Assessment



Guam's Silver Jacket Collaboration

Developing capacity to address
Island community goals in
reducing flood risk

Guam's Silver Jacket Collaboration

Silver Jackets represents GovGuam's state-led interagency team that focuses on facilitated collaborative solutions to state hazard priorities his collaboration discussion began in 2018 and has since continued to have conversations on addressing and mitigating flood issues.



Guam's Silver Jacket Collaboration

USACE representative requested the assistance of the University of Guam to look at what types of research can be sponsored to look at flooding and water quality issues.

- Conducting an asset map of the resources and programs surrounding flooding issues
- Role and relationships between government agencies
- Programs and Resources on Flood Mitigation
- Flood Information needs



Climate Resiliency through the lens of the Guam Silver Jackets

5th ANNUAL ASSEMBLY OF PLANNERS' SYMPOSIUM
Dusit Thani Guam Resort Tumon, Guam
February 20, 2020
8:00 am – 5:00 pm
Creating a clear vision in a changing climate



Climate Resiliency through the lens of the Guam Silver Jackets

- Session on real life scenarios of flooding issues around the island.
- Overview of agency mandates to dispel common misconceptions and look at the challenges and gaps with managing flood as well as offer potential solutions for flooding on Island.



Climate Resiliency Tools and Resources

Decisions Support Tools - Digital Coast. Examples on ways to see our landscape through a compressive lens.

